

The Weston™



Design | Technology | Innovation

 BRIGGS®



FEATURES

- Stain-resistant vitreous china
- Siphon-jet flushing action
- Wall-hung design
- 3/4" top inlet spud
- Integral reverse trap
- Extended shields
- Hanging bracket included
- Flush valve sold separately
- Generous 5-year warranty

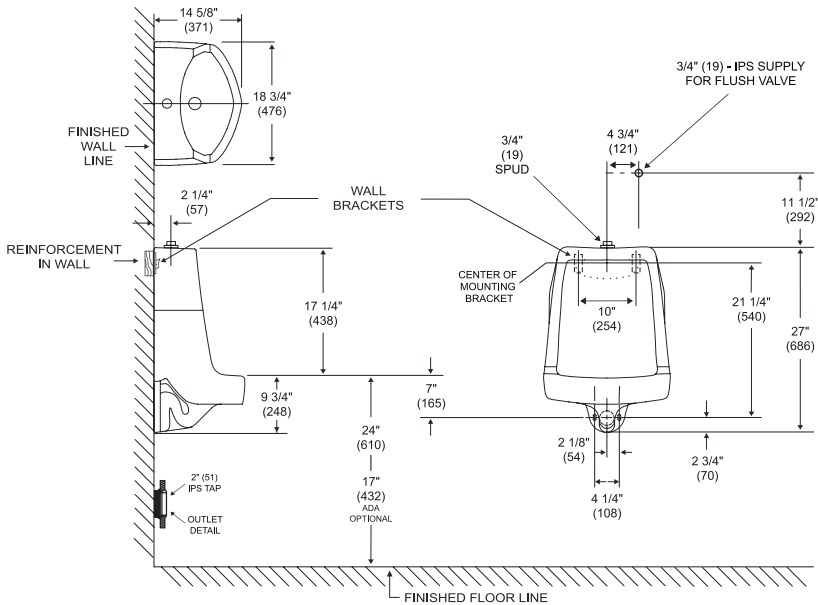
AVAILABLE COLOR



WHITE (130)

SPECIFICATIONS

- Model 7572: Siphon-jet ADA urinal, 54 lb



Dimensions may vary (+) or (-) 1/4". Dimensions shown in parentheses are in millimeters: 25.4 mm = 1 inch. Note: Fixture dimensions are nominal and conform with dimension and performance requirements of ASME/ANSI Standards A112.19.2M. Dimensions subject to change or cancellation without notice. Briggs is not responsible for the use of superseded or voided specification information.



(800) 888-4458

www.briggsindustries.com